

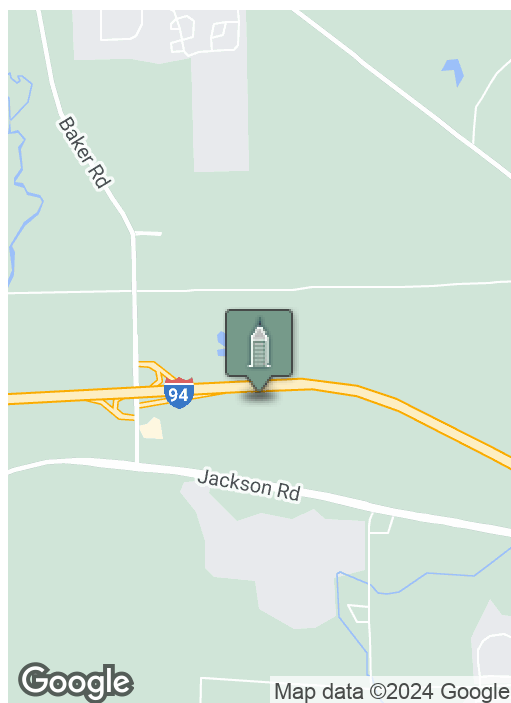
# Scio Commerce Center - Flex Space

317 METTY DRIVE, ANN ARBOR, MI 48103



**Swisher**  
COMMERCIAL

**FOR LEASE**



## SUMMARY

Lease Rate:	\$10.75 SF/yr Plus Utilities
Available SF:	4,800 - 9,600 SF
Zoning:	I-1 (Limited Industrial)

## PROPERTY HIGHLIGHTS

- Scio Commerce Center
- Two 4,800 SF suites - can be combined for a total of 9,600 SF
- Nice mix of private offices and open work area
- 16' ceiling height
- Each suite has one 10'x14' overhead door
- 200 amps of 208 volt 3-phase electric
- Gas fired radiant tube heat
- Conveniently located off Jackson Road near the I-94 at Baker Road interchange

***Building  
relationships.***

208 East Washington Street Ann Arbor, MI 48104

734.663.0501

**Jeff Evans**

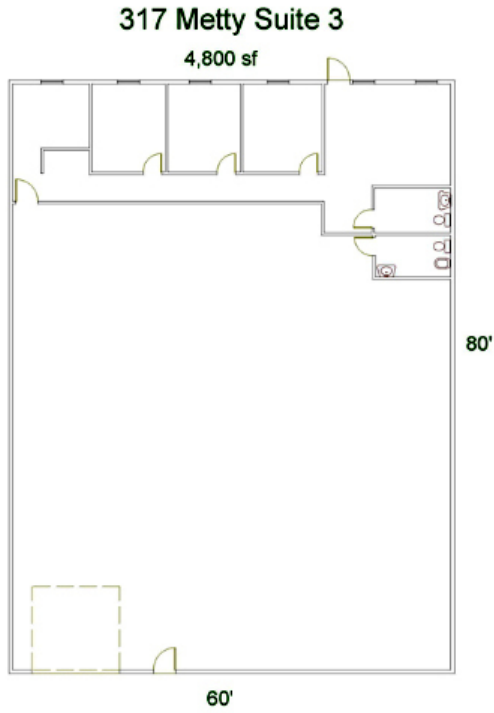
734.926.0222

JEFFEVANS@SWISHERCOMMERCIAL.COM

SWISHERCOMMERCIAL.COM

# Scio Commerce Center - Flex Space

317 METTY DRIVE, ANN ARBOR, MI 48103



***Building relationships.***

208 East Washington Street Ann Arbor, MI 48104

734.663.0501

Jeff Evans

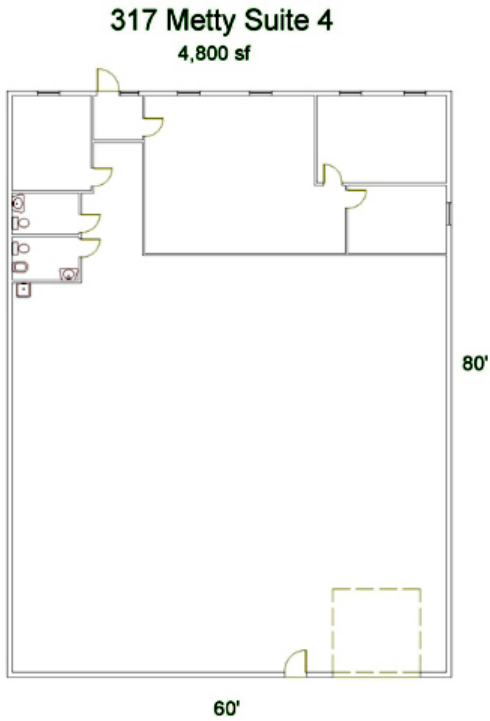
734.926.0222

JEFFEVANS@SWISHERCOMMERCIAL.COM

SWISHERCOMMERCIAL.COM

# Scio Commerce Center - Flex Space for Lease

317 METTY DRIVE, ANN ARBOR, MI 48103



***Building relationships.***

208 East Washington Street Ann Arbor, MI 48104

734.663.0501

Jeff Evans

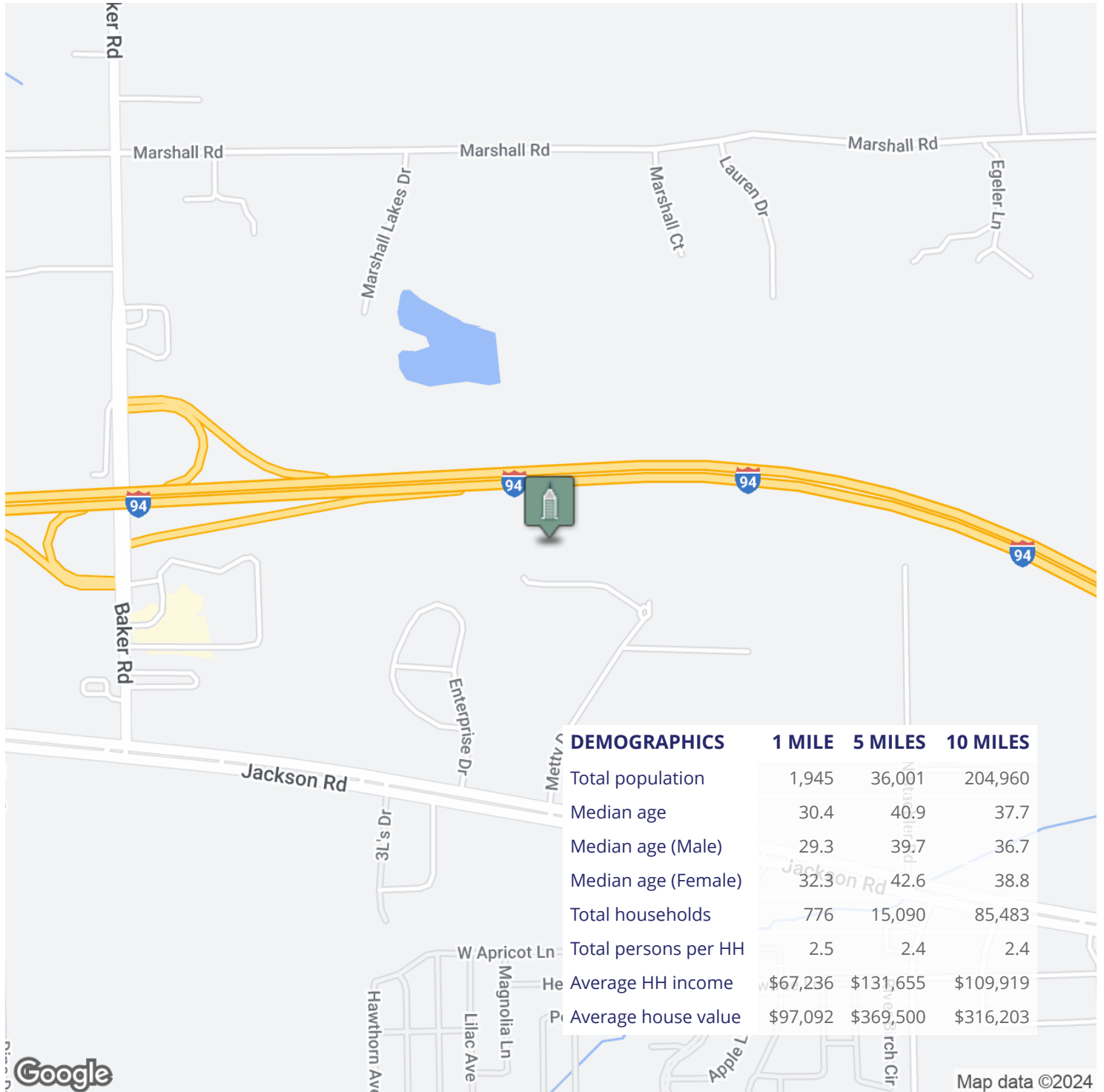
734.926.0222

JEFFEVANS@SWISHERCOMMERCIAL.COM

SWISHERCOMMERCIAL.COM

# Scio Commerce Center - Flex Space

317 METTY DRIVE, ANN ARBOR, MI 48103



**Building relationships.**

208 East Washington Street Ann Arbor, MI 48104

734.663.0501

Jeff Evans

734.926.0222

JEFFEVANS@SWISHERCOMMERCIAL.COM

SWISHERCOMMERCIAL.COM