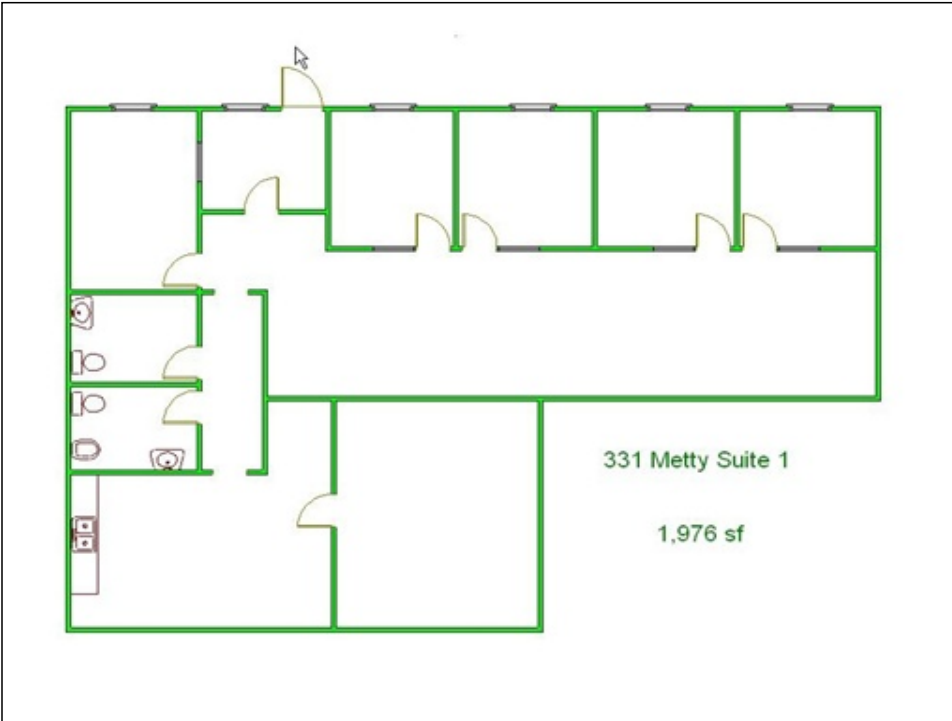


For Lease

331 METTY Drive, Suite 1

SCIO TOWNSHIP, ANN ARBOR, MICHIGAN

1,976 sf Office Space



LOCATION: Conveniently located in Scio Commerce Center, off Jackson Avenue between Baker and Zeeb. Easy access to I-94 and M-14 with close proximity to US-23. Ann Arbor address with township taxes!

ZONING: I-1, Light Industrial, Scio Township, 734-665-2123

BUILDING: 1,976 sf of office space in excellent condition. Includes kitchenette/dining area, conference room, 2 restrooms, and a nice mix of private offices and open work area.

PARKING: Ample at-the-door parking.

LEASE TERMS: 36 months

LEASE PRICE: \$10.00/sf plus utilities. Rent is \$1,646.67/month plus utilities.

Contact: **John Evans**
David Hamilton, CCIM

direct: 734-662-3682
direct: 734-662-3745

evans@swishercommercial.com
daveh@swishercommercial.com

Building relationships.



208 East Washington St. Ann Arbor, MI 48104
tel: 734.663.0501 fax: 734.663.0316
www.swishercommercial.com