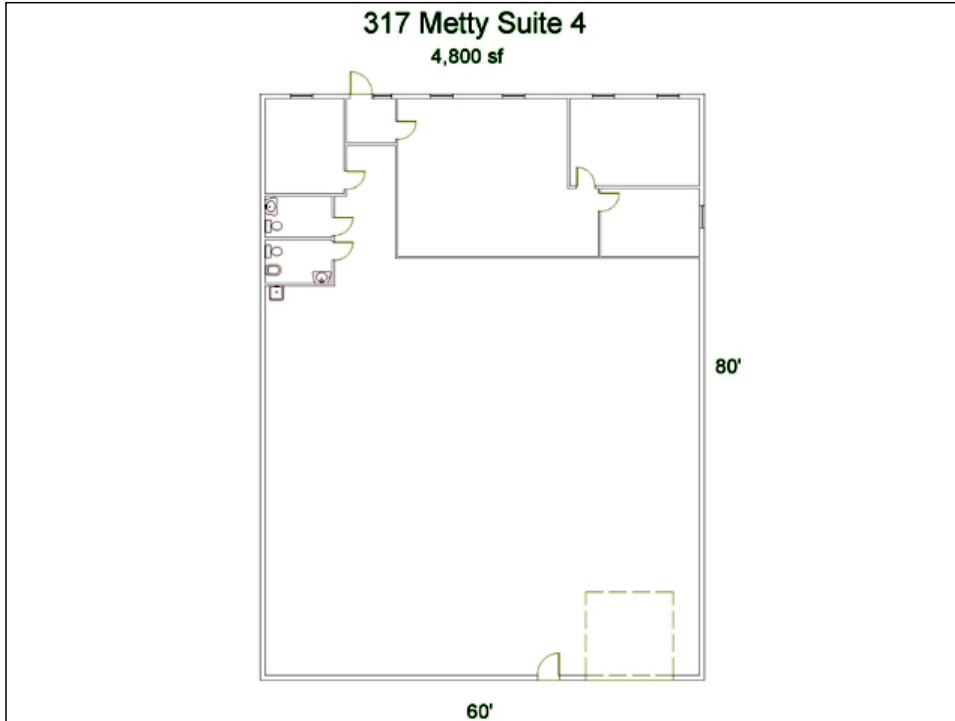


# For Lease

# 317 METTY Drive, Suite 4

SCIO TOWNSHIP, ANN ARBOR, MICHIGAN

## office / warehouse flex space



**LOCATION:** Conveniently located in Scio Commerce Center, off Jackson Avenue between Baker and Zeeb. Easy access to I-94 and M-14 with close proximity to US-23. Ann Arbor address with township taxes!

14' ceilings, 200 amps of 208 volt 3 phase power, and gas fired radiant tube heat.

**ZONING:** I-1, Light Industrial, Scio Township, 734-665-2123

**BUILDING:** Built 1984, this attractive 19,200 sf single story building is divided into four 4,800 sf suites. Suite 4 has 1,300 sf of office space, and 3,500 sf of warehouse area. One 12' x 12' grade level overhead door,

**PARKING:** At the door parking

**LEASE TERMS:** 36 Months

**LEASE RATE:** \$5.50/sf NNN  
Tax, insurance, and CAM is \$1.90/sf. The monthly rent is \$2,960 plus utilities.

Contact: **David Hamilton, CCIM**  
**John Evans**

direct: 734-662-3745  
direct: 734-662-3682

daveh@swishercommercial.com  
evans@swishercommercial.com

Building relationships.



208 East Washington St. Ann Arbor, MI 48104  
tel: 734.663.0501 fax: 734.663.0316  
www.swishercommercial.com